

Cambridge Brass  
P.O. Box 249  
140 Orion Place  
Cambridge, Ontario  
Canada N1R 5V1  
Tel: (519) 621-5520  
Fax: (519) 621-8674  
http://www.cambridgebrass.com

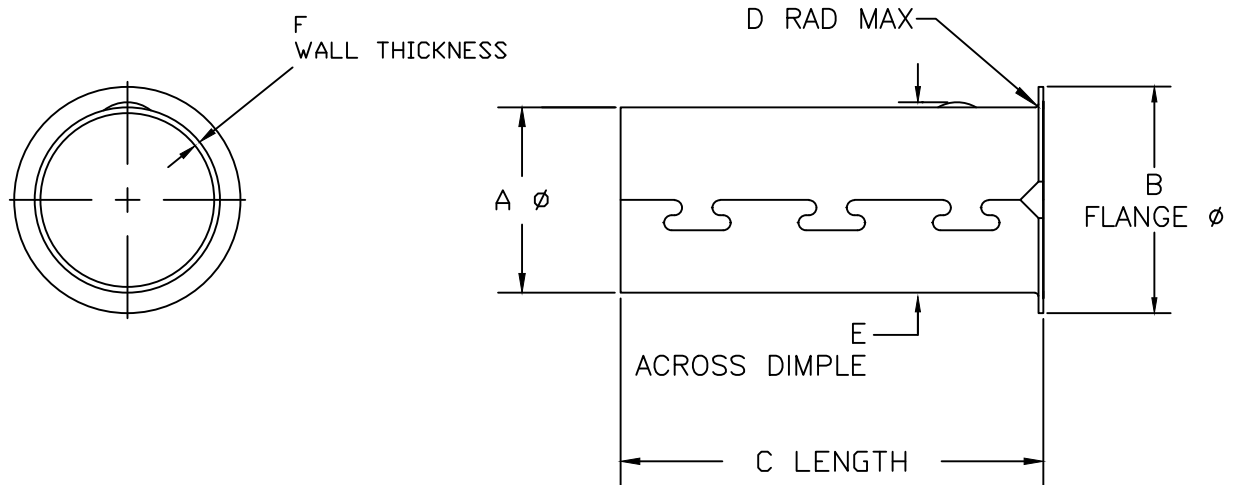


CAMBRIDGE  
(SIZE) PEP  
INSERT 87-(#)

SERIES NO. 87

PE PIPE INSERT

– FOR USE WITH POLYTHEYLENE PIPE WITH SCH 40 STEEL PIPE INSIDE DIAMETER  
AND WALL THICKNESS DIMENSION RATIO OF SIDR 7 PER STANDARDS ASTM D2239 OR AWWA 901



PARTS AND MATERIAL:

1. INSERT MADE OF ANSI TYPE 304 STAINLESS STEEL

FEATURES:

- FOR USE WITH SIDR 7 PE PIPE
- SIZE AND "PEP" STAMPED ON THE PART
- DIMPLES AND COLLAR TO POSITION AND RETAIN WITHIN PIPE

SIZE	P/N	A	B	C	D	E	F
3/4	87-3	.812/.805	.975/1.030	2.38	.02	.845	.027±.002
1	87-4	1.032/1.024	1.255/1.328	2.38	.02	1.065	.027±.002
1 1/4	87-5	1.371/1.362	1.505/1.600	3.25	.02	1.400	.027±.002
1 1/2	87-6	1.602/1.593	2.005/2.100	3.25	.02	1.630	.027±.002
2	87-7	2.044/2.035	2.300/2.400	3.25	.02	2.072	.027±.002

Cambridge Brass considers the information in this submittal form to be correct at the time of publication. Item and option availability, including specifications, are subject to change without notice.

Submitted by: